

# OPEN EVENTS FEELING INSPIRED?

Register for our  
Open Events!

024 7624 3000  
www.nwslc.ac.uk  
enquiries@nwslc.ac.uk

## Nuneaton Campus

Hinckley Road, Nuneaton,  
CV11 6BH

Register today  
[nwhc.ac.uk/openevents](http://nwhc.ac.uk/openevents)

## Hinckley Campus

Creative Arts only

Lower Bond Street,  
Hinckley, LE10 1QU

Register today  
[nwhc.ac.uk/openevents](http://nwhc.ac.uk/openevents)

## Wigston Campus

Blaby Road, South Wigston,  
Leicestershire, LE18 4PH

Register today  
[slcollege.ac.uk/  
openevents](http://slcollege.ac.uk/openevents)



**PART-TIME  
& ONLINE**  
COURSE GUIDE

Learn for fun, enhance your CV or even change your career!

# WHY CHOOSE A PART-TIME COURSE?



See what courses are  
available for you overleaf



# WORK-RELATED COURSES

024 7624 3000

nwslc.ac.uk



COURSE	LOCATION	DATE	DURATION	TIME	COST	FUNDING/LOAN AVAILABLE?
<b>COUNSELLING</b>						
Counselling Studies Level 2	Wigston Campus	Mondays starting 25/02/19	1 year	18.00-21.00	£475	Y
Counselling Studies Level 2	Nuneaton Campus	Tuesdays starting 26/02/19	1 year	18.00-21.00	£475	Y
Counselling Studies Level 3	Wigston Campus	Mondays starting 25/02/19	1 year	9.30-12.30	£811	Y
Counselling Studies Level 4	Wigston Campus	Mondays starting 25/02/19	2 years	13.30-19.30	£4670	Y
<b>ENGLISH &amp; MATHS</b>						
GCSE and Functional Skills in English and Maths	Nuneaton/Wigston Campus	Various - Daytime and Evenings	Various	Various	FREE (Subject to eligibility)	Y
<b>FLORISTRY</b>						
Level 2 Floristry	Wigston Campus	Thursday starting 17/01/19	20 weeks	18:00-21:00	£490	Y
<b>FOOD SAFETY</b>						
Level 2 Award Food Safety in Catering	Nuneaton Campus	Monday 14/01/19, 04/02/19, 04/03/19, 01/04/19, 13/05/19 OR 03/06/19	1 Day	9.30-16.00	£25	Y
<b>FORKLIFT TRUCK/MOTOR VEHICLE</b>						
Intermediate Body and Paint	Nuneaton Campus	Thursdays starting 17/01/19	12 weeks	18:00-21:00	£390	N
IMI Level 4 Advanced Automotive Studies	MIRA Technology Institute Nuneaton	Various start dates	5 week blocks	09:00-17:00	£1895	Y
Forklift Truck - Full Counterbalance	Harrowbrook Campus	Various dates: Monday- Friday	1 week	09.00-16.00	£395	Y
Forklift Truck - Refresher Counterbalance/Reach	Harrowbrook Campus	Various dates: Monday- Friday	1 day	09.00-16.00	£105	Y
<b>HAIRDRESSING</b>						
Level 2 Hairdressing	Nuneaton Campus	Tuesdays and Thursdays starting 22/01/19 OR 19/12/19	30 weeks	18:00-21:00	£1285	Y
<b>IT &amp; COMPUTING</b>						
IT for Beginners Level 1	Nuneaton Campus	Thursdays starting 24/01/19	18 weeks	18.00-21.00	£350	Y
<b>PROFESSIONAL QUALIFICATIONS</b>						
CIM Certificate Unit 2: Integrated Communications	Wigston Campus	Thursdays starting 10/01/19	10 weeks	18.15-21.15	£398	N
CIM Certificate Unit 3: Digital Marketing Level 4	Wigston Campus	Thursdays starting 02/05/19	10 weeks	18.15-21.15	£395	N
CIPS Diploma Negotiating Contracting Procurement & Supply Level 4	Online Learning/Wigston Campus	Revision dates 04/03/19, 13/05/19, 16/05/19	6 weeks	18.00-21.15	£385	N
CIPS Diploma Managing Contracts Relationships Procurement Supply Level 4	Online Learning/Wigston Campus	Revision dates 04/03/19, 13/05/19, 16/05/19	6 weeks	18.00-21.15	£385	N
CIPS Diploma Contexts of Procurement & Supply Level 4	Online Learning/Wigston Campus	Revision dates 04/03/19, 13/05/19, 16/05/19	6 weeks	18.00-21.15	£385	N
<b>SPORT &amp; PUBLIC SERVICES</b>						
Level 3 Personal Training	Nuneaton Campus	Tuesdays, Thursdays, Fridays starting 28/01/19	16 weeks	09:00-14:30	£1417	Y
<b>TEACHING</b>						
Award in Education	Hinckley Campus	Wednesdays starting 27/02/19	15 weeks	18:00-21:00	£390	N
<b>TRADES</b>						
Electrical Installations 18th Edition	Nuneaton Campus	Tuesdays starting 12/03/19	8 weeks	18.00-21.00	£500	N
Welding Skills MIG Level 1/2	Nuneaton Campus	Tuesdays starting 05/03/19	17 weeks	18.00-21.00	£480	Y
Welding Skills TIG Level 1/2	Nuneaton Campus	Tuesdays starting 05/03/19	17 weeks	18.00-21.00	£480	Y
Welding Skills ARC Level 1/2	Nuneaton Campus	Tuesdays starting 05/03/19	17 weeks	18.00-21.00	£480	Y
CSCS Card - Health and Safety in a Construction Environment	Harrowbrook Campus	Mondays starting 21/01/19	1 week	09.00-16.30	£125	Y



COURSE	LOCATION	DATE	DURATION	TIME	COST	FUNDING/LOAN AVAILABLE?
<b>CREATIVE ARTS</b>						
Ceramics – Hand Building & Throwing	Hinckley Campus	Mondays starting 14/01/19, 04/03/19 OR 29/04/19	6 weeks	18.00–21.00	£80	N
Upcycling Furniture	Hinckley Campus	Mondays starting 14/01/19 OR 25/02/19	5 weeks	18.00 – 20.00	£65	N
Introduction to Glass Work	Hinckley Campus	Wednesday starting 22/01/19	6 weeks	18.00–20.00	£80	N
Website Design Digital Photography	Hinckley Campus	Mondays starting 25/02/19	12 weeks	18.00–21.00	£150	N
Digital Photo Albums for Beginners	Hinckley Campus	Wednesdays starting 16/01/19	5 weeks	18.00–20.00	£100	N
Introduction to Desktop Publishing Design	Hinckley Campus	Mondays starting 25/02/19	10 weeks	18.00–21.00	£150	N
Life Drawing	Hinckley Campus	Mondays starting 28/01/19	10 weeks	18.00 – 20.00	£100	N
<b>FLORISTRY</b>						
Introduction to Floristry	Hinckley Campus	Wednesdays starting 16/01/19, 27/02/19, 03/04/19 OR 22/05/19	5 weeks	18.30 -20.30	£105	N
Introduction to Floristry	Wigston Campus	Mondays starting 14/01/2019, 25/02/19 OR 01/04/19	5 weeks	18.00 – 20.00	£105	N
Introduction to Floristry	Nuneaton Campus	Tuesdays starting 15/01/19, 26/02/19, 02/04/19 OR 21/05/19	5 weeks	18.30 -20.30	£105	N
<b>LANGUAGES</b>						
French Beginners, Post Beginners and Intermediate Speaking & Listening	Nuneaton and Hinckley Campus	Evenings starting w/c 28/01/19	15 weeks	18.30 -20.30	£90	Y
French Beginners, Post Beginners and Intermediate Reading & Writing	Nuneaton and Hinckley Campus	Evenings starting w/c 28/01/19	15 weeks	18.30 -20.30	£90	Y
Spanish Beginners, Post Beginners and Intermediate Speaking & Listening	Nuneaton and Hinckley Campus	Evenings starting w/c 28/01/19	15 weeks	18.30–20.30	£90	Y
Spanish Beginners, Post Beginners and Intermediate Reading & Writing	Nuneaton and Hinckley Campus	Evenings starting w/c 28/01/19	15 weeks	18.30–20.30	£90	Y

## DEEPA NAGAR

### Introduction to Floristry

I chose to do the Introduction to Floristry course because it focused on a Christmas theme.

I have learnt lots of different techniques each week, which I then have used to make floral arrangements for my friends and family.

With this short course being on a Monday I was able to get on with the rest of my week as usual, whilst having the pleasure of seeing my arrangement bloom!



## PAYING FOR YOUR COURSE

Some courses listed above have funding available, meaning you may not have to pay the full cost.

### Unemployed and low income support

If you are unemployed or earn £15,736.50 or under you may be eligible for support. Contact us for more information.

### Advanced Learner Loan

Available if you are aged 19 or over and studying a further education course at level 3 or above. You will only have to pay the loan back once you are earning over £25,000 a year.

If you study an Access to HE course and progress on to university, you won't have to pay back your Advanced Learner Loan. Visit [gov.uk/advanced-learner-loan](http://gov.uk/advanced-learner-loan)

024 7624 3000  
[www.nwslc.ac.uk](http://www.nwslc.ac.uk)  
[enquiries@nwslc.ac.uk](mailto:enquiries@nwslc.ac.uk)

# Free Online Courses

## ELIGIBILITY CRITERIA

You must be a British or EEA Citizen and aged 19 or over.

If you are aged between 19 and 23, you must also hold a Level 2 qualification.



Study to fit around your work and home life



No exams, no fees



Available to start all year around



Approximately 12 weeks in duration



Learn from home - all materials provided

## HEALTH AND WELLBEING

- Awareness of Mental Health Problems
- Understanding Behaviour That Challenges
- Care & Management of Diabetes
- Certificate in Common Health Conditions
- Certificate in Falls Prevention Awareness
- Customer Service in a Health Care Setting
- Certificate in Introducing Caring for Children and Young People
- Certificate in Understanding Children & Young People's Mental Health
- Certificate in Understanding Safeguarding & Prevent Dignity & Safeguarding in Adult Health & Social Care
- Prevention & Control of Infection in Health Care Settings
- Principles of Care Planning
- Principles of Dementia Care
- Principles of End of Life Care
- Understanding Autism
- Understanding Nutrition and Health
- Understanding the Safe Handling of Medicines
- Understanding Specific Learning Difficulties
- Working with Individuals with Learning Disabilities
- Working with People with Mental Health Needs

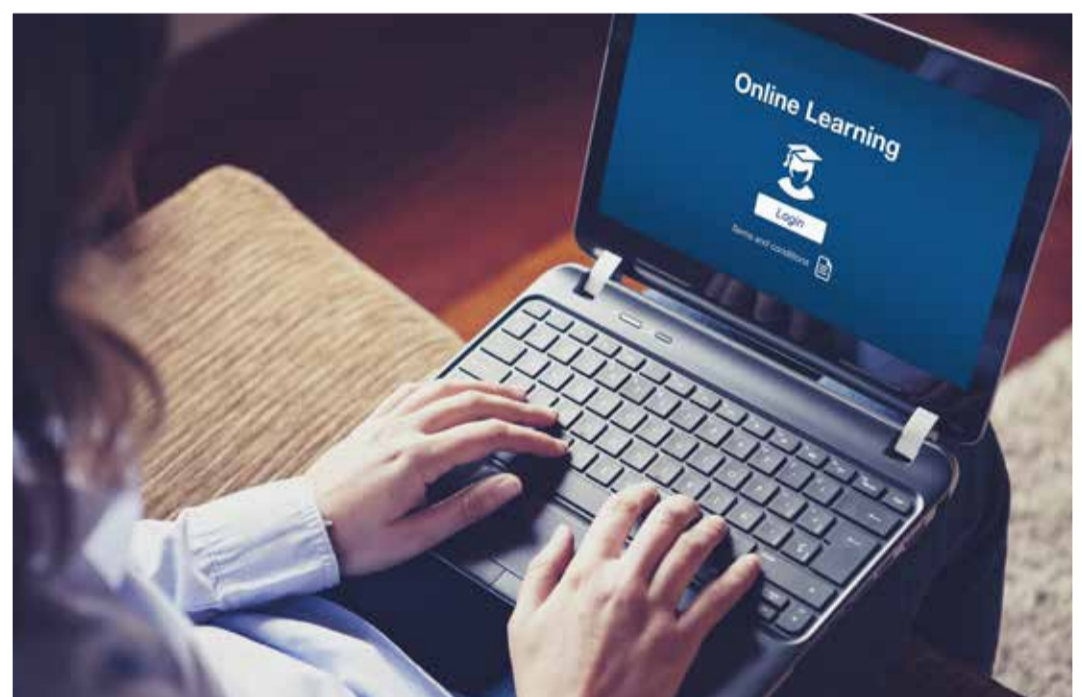
## BUSINESS, ADMINISTRATION AND MANAGEMENT

- Lean Organisation Management Techniques
- Principles of Business Administration
- Principles of Customer Service
- Principles of Team Leading
- Principles of Customer Service
- Understanding Retail Operations

## INFORMATION, ADVICE OR GUIDANCE

## EQUALITY AND DIVERSITY

## PRINCIPLES OF WAREHOUSING & STORAGE



## DAN ECCLESTON

Online Learning, Principles of Team Leading

"I really liked being able to study in my own time and at my own pace. The online learning materials are easily accessible wherever I am and there is excellent support available from college tutors, without having to go into a classroom."

## DISCLAIMER

Information is correct at the time of going to press. Every effort is made to ensure accuracy. The College reserves the right to withdraw or amend courses, entry requirements, fees and details included in this publication.